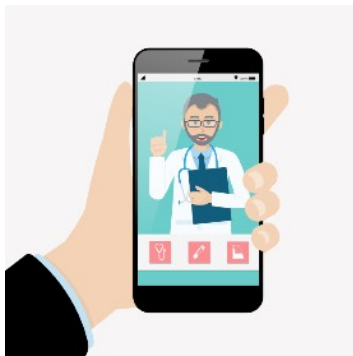


We're proudly providing high volumes of frontline services to our patients during the COVID-19 pandemic - here's how from January 1st to June 30th 2021

**6,537**  
face to face GP  
appointments



**10,282**  
face to face nurse  
appointments



**18,927**  
phone or video  
appointments



**23,497**  
COVID-19  
vaccinations

**3,025**  
patient health  
referrals



**186,109**  
prescription  
items  
issued



**2,143**  
fit notes  
issued



**1,317**  
new  
patients  
added

Your GP practice serves almost 21,000 patients living in Bicester or its close surrounding districts